



SOLID-BOX

Elegant IP66/67 enclosure for industrial applications



DEAR READER

In the latest issue of our customer magazine INSIDE, we present SOLID-BOX – our tough new enclosures for industrial electronics.

SOLID-BOX desktop and wall-mount enclosures safeguard electronics in challenging indoor and protected outdoor locations. Thanks to IP 66/IP 67 ingress protection and IK 08 impact resistance, SOLID-BOX protects your devices even in harsh environments. These advanced enclosures also look great, thanks to their highly polished surface and flush-fitting trims that conceal all the fixing and mounting screws.

Another key focus of this issue is MEASURING TECHNOLOGY – and how high-quality enclosures ensure reliability and precision in sensitive, finely calibrated devices. Discover the many ways in which OKW enclosures benefit electronics designers and end users in this important sector.

In addition, we also report on our current construction work and other ways in which OKW is gearing up for the future.

We hope you enjoy reading our magazine!

IMPRINT

Magazine

INSIDE – the OKW Customer Magazine

Publisher

Odenwälder Kunststoffwerke Gehäusesysteme GmbH
Friedrich-List-Str. 3, D-74722 Buchen
Tel. +49 (0) 62 81 404-00
Fax +49 (0) 62 81 404-144
E-Mail Info@okw.com
Web www.okw.com

Management

Dipl.-Betriebswirtin (BA) Yvonne Ellwanger,
Dipl.-Ing. Christoph Schneider

Editors

Andrea Dietrich, Patricia Hart, Kay Hirmer, Lisa-Marie Ott, Kerstin Riedling,
Christoph Schneider, Nadja Schneider

Graphics

Kerstin Riedling

Print

Flyeralarm GmbH, Alfred-Nobel-Str. 18, D-97080 Würzburg

Graphics & photos

Odenwälder Kunststoffwerke Gehäusesysteme GmbH,
Fotostudio Respondek, D-74722 Buchen,
Adobe Stock-Bilder

Issue

November 2023

Reprinting and duplication, even excerpts, only with
the permission of the publisher.

Dipl.-Ing.
Christoph Schneider

Dipl.-Betriebswirtin (BA)
Yvonne Ellwanger



The new SOLID-BOX

6-9

Robust, tight and stylish at the same time - that is the new SOLID-BOX. It is particularly suitable for modern electronics packaging in industrial environments.



MEASURING TECHNOLOGY

10-13

Focus on precision: Modern housings are essential for powerful and reliable measurement technology.



EMBEDDED SYSTEMS

14-15

Individualized standard housings as a solution for embedded systems dynamic design processes.



PRODUCT SUPPLEMENTS

16-19

Extensions and additions to existing housing series and of the accessories program.



PRODUCTION NEWS

20-21

Innovations in the in-house service center: for even better, individual customer solutions.



IT NEWS

22

Introduction of the new CRM SYSTEM and update to SAP S/4HANA.



BUILDING MEASURES

23

Investments in the future: The groundbreaking ceremony for the new logistics centre was completed, and further plans for a modern company concept are in place.



EMPLOYEE NEWS

24-25

Two retired employees said goodbye, a successor in the technology department has already been filled and new recruits have come from our own ranks.



MINT IM ODENWALD

26-27

A project of the Joachim & Susanne Schulz Foundation and the Federal Ministry of Education and Research, with the OKW Group as a practical partner.



SOLID-BOX

Electronics for IIoT/Smart Factory, HVAC, plant engineering and safety technology should be housed in robust enclosures. These housings must be stable and impact-resistant with strong, thick walls and a sealed compartment with plenty of space for components. There must be flat surfaces for fitting cable glands. And the enclosure must be manufactured from flame-retardant materials.

Author: Kay Hirmer, Strategic Product Management, OKW Gehäusesysteme

Meeting all these requirements can significantly limit the design possibilities – especially when it comes to the look of the enclosures. But even those destined for challenging applications should have smart, modern aesthetics that reflect the high quality and value of the electronics inside.

OKW's new SOLID-BOX meets all the requirements of a modern plastic enclosure designed for industrial environments or protected outdoor areas. It can be mounted on a wall or pole, or specified for table-top electronics. Flush, snap-in panels conceal the lid and mounting screws, while the enclosure's surface is highly polished; together these features create an elegant appearance.

A TOUGH ALL-ROUNDER - WITH STRENGTH AND QUALITY AS STANDARD

SOLID-BOX features IK 08 impact protection and IP 66/IP 67 ingress protection. The seal is pre-fitted in the lid, which is recessed to accommodate a membrane keypad. There are two large recesses in the base section to protect interfaces and cable glands.

These two-part enclosures are assembled with rust-proof, captive, tamperproof Torx screws located outside the sealed interior. Preformed threads in the

screw channels ensure the enclosure can be reopened repeatedly without any problems.

On the rear, there are mounting points that match the hole patterns of VESA MIS-D 75/100. (Size 145 VESA 75 x 75 mm, Size 175 VESA 100 x 100 mm). The required holes can be drilled in-house. Inside, the enclosures feature fastening pillars for PCBs, DIN rails and mounting plates.

The enclosures are moulded from flame-retardant PC+ABS (UL 94 V-0 from 1.50 mm) with improved heat resistance (Vicat/B 120 = 110°C) and a glow wire (GWFI) test rating of 960°C at 2.0 mm.

SOLID-BOX is available from stock in anthracite grey (RAL 7016) and light grey (RAL 7035) as standard. There are three sizes: 135 x 115 x 50 mm, 180 x 145 x 60 mm and 225 x 175 x 70 mm.

SPECIFY SOLID-BOX WITH ACCESSORIES

Accessories for SOLID-BOX include internal hinges, lid-securing hinges, enclosure feet, Torx screwdrivers and screws. Various cable glands are also available, including a Quick-Fix type for faster installations.

For industrial environments with fluctuations in temperature and pressure, we recommend pressure-

**NEW
PRODUCT**



compensation cable glands (M12, M16, M20). They protect the sealed enclosures from condensation by allowing constant ventilation and adjustment of the pressure inside the housing. These IP 68 cable glands feature a PTFE membrane: water entry point: > 0.2 bar (for the membrane), RQ = 57 l/h (theoretical air flow rate at 0.07 bar). Their clamping blades provide good cable-friendly strain relief.

EVEN MORE OPTIONS THROUGH CUSOMISATION

SOLID-BOX can be specified fully customised. Services available in-house include:

1. CNC machining

We can perform customer-specific machining such as milling, tapping, engraving, drilling, countersinking, cutting and stamping on request.



2. Printing

Custom branding, legends, logos and photo-quality graphics and images are possible. We offer screen printing, tamper printing and digital printing.

3. Decor foils / labels / stickers

We can digitally print decor foils quickly and easily for small batches starting with one unit. Consecutive numbering, codes and technical specifications are possible.

4. Laser marking

Abrasion-resistant laser marking is ideal for very small, machine-readable markings such as QR codes, DataMatrix codes and barcodes. This quick and easy process can be specified for individual texts, logos and consecutive numbering of parts.

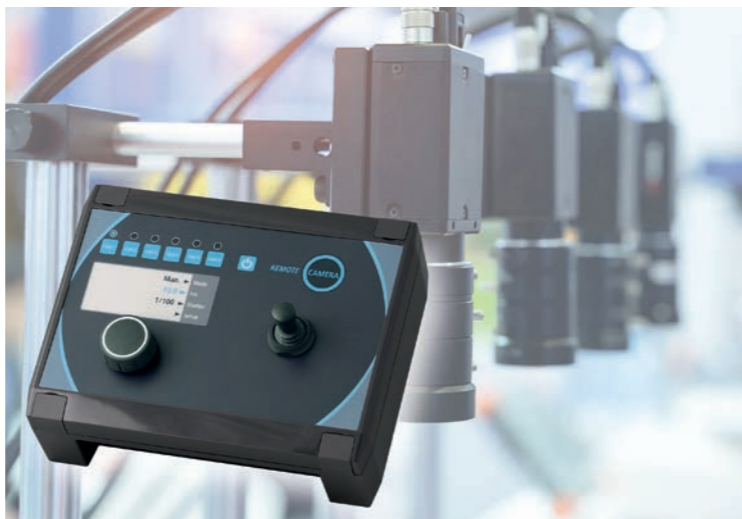
5. Special materials

We can also produce a large number of our enclosures in special colours on request. We can match the colour you need. In case of the new SOLID-BOX, it

would be possible to have the design trims injection-moulded in a different colour to code the function or device series (minimum quantity and feasibility on request). However, it should be noted that special materials may have other properties such as heat resistance, flame retardancy or chemical resistance.

6. EMC shielding

The inside of the enclosure is coated with aluminium to shield the plastic parts, which would otherwise offer no protection against electromagnetic radiation.



SMART FARMING (Example of Application)

DESIGNER STATEMENT:

"A SOLID-BOX delivers what its name promises. In this enclosure, watertight and particularly impact-resistant, your components can be placed stably and securely even in inhospitable environments, without visible screw connections or fasteners. And yet the design of the enclosures gives the robust construction an elegant lightness. The slightly sloping bevels surrounding the long sides and the interplay of light and shadow underline the quality of the product."

Martin Nussberger, polyform Industrie Design

BENEFITS of the new SOLID-BOX:

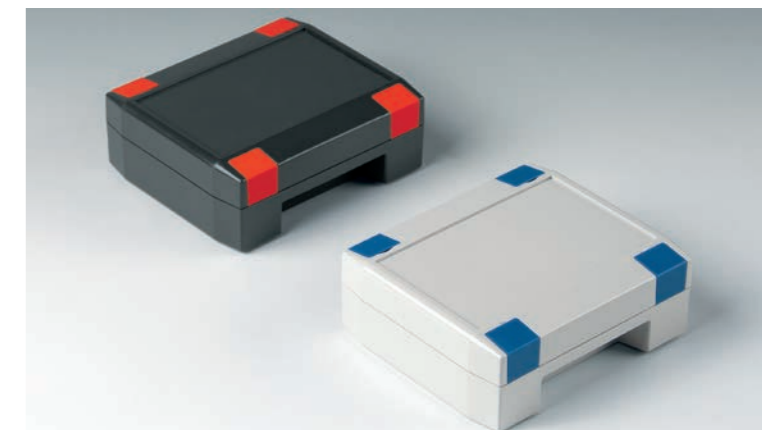
- 3 enclosure sizes in 2 standard colours
- convincing design thanks to the modern, highly polished enclosure surface snap-on design trims in the top panel conceal all the fixing screws
- can be used as desktop and wall-mounted enclosures
- high IP 66/67 protection class and IK 08 impact protection offer safety – even in harsh environments; the seal is pre-fitted in the top part
- excellent, flame-retardant V-0 rated material (1.50 mm) with increased heat distortion temperature (Vicat/B 120 = 110°C), chlorine- and bromine-free flame resistance
- enclosure assembly with rust-proof, captured Torx screws outside the sealed interior
- 2 recessed areas in the bottom part for installation/ protection of connectors, switches and other interfaces – easy and user-friendly to connect
- recessed operating area in the top for flush fitting a membrane keypad or product label
- screw channels under the design trims allow for direct, concealed wall mounting
- mounting points on the rear of sizes 145 and 175 match the hole patterns of VESA MIS-D 75/100
- integrated fastening pillars for PCBs, DIN rails and mounting plates
- accessory hinge set retains the top panel in situ during assembly and servicing
- enclosure feet kit (accessory) for non-slip positioning on a desktop



Integrated mounting points and hinge set



Enclosure feet for secure stand



Contour-flush design panels for concealed Screw connection area (here in special colors)



MODERN ENCLOSURES FOR TODAY'S ACCURATE AND RELIABLE MEASURING TECHNOLOGY

MEASURING TECHNOLOGY



Whether in industry, research and laboratories, healthcare or in environmental technology, measuring devices play a central role in the monitoring and optimisation of processes. They help to improve efficiency, productivity and quality of life.

Author: Kerstin Riedling, Marketing, OKW Gehäusesysteme

Precise recording, analysis and control of a wide variety of physical and geometric variables is essential. These can include temperature, pressure, electrical voltages, currents, and optical and acoustic metrics. State-of-the-art sensors are used in connection with control technology, and in some cases with artificial

intelligence in self-learning systems: accurate measurement is the top priority. For precise results, all components – including the housing – must therefore meet the highest quality standards.

DIFFERENT DESIGNS DEPENDING ON APPLICATION

Mobile or stationary, indoors or outdoors, wired or standalone – the design of devices varies depending on their area of application. Desktop or wall-mounted enclosures are particularly suitable for electronics in a fixed location, while handheld or wearable devices offer portability and versatility. The world of measurement technology is as diverse as it is complex – and therefore so are the requirements for the enclosures. However, the devices all have one thing in common: they are equipped with high-quality precision electronics that must be housed accordingly.

SPECIFYING THE BEST HOUSING FOR THE APPLICATION

Advanced electronic enclosures play a crucial role in the performance and longevity of smart measuring devices because they protect the sensitive circuitry at the heart of the technology. The following considerations are vital when specifying the right housing:



1. IP protection class:

The IP rating indicates the degree of protection an enclosure offers against dust and moisture ingress. The protection required depends on the environment in which the measuring device will be used – the harsher the environmental conditions, the greater the protection needed. Furthermore, temperature and pressure fluctuations can create condensation in hermetically sealed electrical and electronic enclosures, necessitating the use of pressure compensation elements. These ensure constant ventilation and adjustment of the pressure inside the enclosure.





DATEC-COMPACT as a wood moisture measuring device

2. Material:

Plastic cases often offer a good balance of strength, weight and cost. They also offer flexibility with regard to shape and colour. Different plastics provide different levels of UV or chemical resistance, flammability, impact strength, wear resistance and more, depending on the composition of the material.

3. Size and style:

The enclosure must be the right size, whether for miniaturized electronics or a large-volume device. A well-thought design should also offer efficient and versatile mounting options. Importantly, each enclosure should be highly ergonomic, enabling users to view displays and operate controls comfortably and efficiently.

ADDED VALUE THROUGH HIGH-QUALITY, CUSTOMISED ENCLOSURES

High-quality enclosures offer electronics designers many advantages. Reliable protection of sensitive components and precise matching of the housing to the electronic installations (or vice versa) can enhance measurement accuracy. A good enclosure also extends the longevity of the device, minimising the risk of failures and repairs – saving time and money. And when a standard design reaches its limits, application-oriented accessories and customisation services can create the perfect solution.

OKW ENCLOSURES RELIABLY HOUSE MEASURING ELECTRONICS

OKW enclosures offer various installation options, depending on the application.

DATEC-COMPACT:

DATEC-COMPACT (IP 65) is a robust, ergonomic enclosure that fits comfortably and securely in the hand – ensuring fatigue-free operation for devices such as multimeters. It has a foamed-in seal and is moulded from UV-stable, flame-retardant ASA+PC-FR (UL 94 V-0), making it ideal for both indoor and outdoor applications. The enclosures are offered in off-white (RAL 9002) and lava as standard. Three sizes are available: S 136 x 74 x 32 mm, M 172 x 92 x 39 mm and L 206 x 110 x 47 mm.

SOLID-BOX:

With IK 08 impact resistance, SOLID-BOX (IP 66, IP 67) meets all the criteria required of a modern electronics enclosure destined for industrial environments or protected outdoor areas. It is designed for larger devices such as amplifiers or for applications such as level measurement and smart farming. Flush-fit snap-in panels cover the fixing and mounting screws. Together with the highly polished housing surface, this creates an elegant appearance. The top is recessed to accommodate a membrane keypad. SOLID-BOX is moulded from high-quality, flame-retardant PC+ABS (UL 94 V-0) with improved heat resistance (Vicat/B 120 = 110 °C).



SOLID-BOX for data collection

PROTEC as a multimeter measuring device

There are two standard colours: anthracite grey (RAL 7016) and light grey (RAL 7035). The enclosures are available in three sizes: 135 x 115 x 50 mm, 180 x 145 x 60 mm and 225 x 175 x 70 mm, enabling the design and manufacture of a visually uniform device series.

PROTEC:

PROTEC (IP 65 optional) is perfect for table-top calibration devices. These desktop and wall-mount enclosures are characterised by their square operating area, which is inclined by 20° for ergonomic viewing and operation. This area is recessed for the integration of a membrane keypad, touchscreen or other controls. The enclosures are moulded from high-quality ASA+PC (UL 94 V-0). There are three sizes – 140/180/200 – and three design variants.

MINI-DATA-BOX:

MINI-DATA-BOX (IP 65 optional) is aimed at miniaturized electronic installations, providing them with an extremely high-quality look. These smart enclosures can be used as small measuring units mounted on walls, rails and pipes both indoors and outdoors. They are available with (or without) flanges for rapid installation with cable ties or screws. There are two shapes: S square (40 x 40 mm and 50 x 50 mm) and E edge/rectangular (40 x 60 mm and 50 x 70 mm, in heights of 15 mm and 20 mm height). The housings are moulded from flame-retardant, UV-stable ASA+PC-FR (UL 94 V-0) in traffic white (RAL 9016) and anthracite grey (RAL 7016). The flanged version is also available in a new two-colour combination: traffic grey A (RAL 7042) base with a traffic white top.



MINI-DATA-BOX as Data-Logger

THE RIGHT ENCLOSURE

Overall, it is clear that specifying the right enclosure has a significant impact on the functionality, reliability and longevity of measuring devices. Use of modern, robust and reliable housings for these devices is essential to ensure performance and precision. When selecting the housing, electronics designers should consider specifications carefully to achieve precise and reliable results.



CUSTOMIZED ENCLOSURES FOR:

EMBEDDED SYSTEMS



WHAT DOES THIS OFFER DEVELOPMENT TEAMS?

Author: Christoph Schneider, CEO, OKW Gehäuseysteme

At the Embedded World exhibition and conference in Nuremberg, it became clear that electronics developers have a strong interest in enclosure technology. More developers are recognising the benefits of enclosures and the outward appearance of devices – even when it is an embedded system. What are developers' requirements? What special solutions can standard plastic housings provide?

Development teams' agility and flexibility are becoming increasingly important in bringing electronics devices to market. Time pressures on the development process – and the ultimate availability of suitable components – mean that decisions are being made as late as possible.

This also affects the enclosure:

- What dimensions and geometries are needed to house the electronics?
- How can the interface between humans and electronics be designed in detail – and yet ideally remain variable until the end of development?

With a specific enclosure development however, time and financial frameworks are clearly defined. Form must be decided early on and will have often already generated high initial costs, investments and development time.

From OKW's perspective – based on experience – deciding early is always best when project quantities in the five-digit range are expected. If everything in development goes as planned, this is a good approach.

But the reality can often be different. With selected components, there may be difficulties in the supply chain, prices of specified components may not remain consistent, there may be more powerful alternative components, and so on.

So if something needs to be adjusted, this can create a problem. Either another expensive and unplanned development loop is necessary – or an unsatisfactory compromise in the overall design of the device has to be made.

And yet, enclosure solutions based on customised standard housings can be adapted right up to the last minute – or even after market launch – without additional investment or loss of time to market.

Standard enclosures from OKW offer the possibility of a problem-free upgrade or downgrade in production volume, as well as the subsequent modification of the housing:

- Does the interface need to be 2 mm further to the left?
- Is a tolerance causing difficulties?
- Is there an issue mounting a display on the domes?
- Is another product variant of a different size needed?

OKW can flexibly implement all customisation work on-site within days instead of months.

This means the embedded idea meets the concept of a standard enclosure. Products for specific applications can be developed safely and flexibly with less effort.

Customising standard enclosures is an ideal way for OKW and its customers to work together on projects. Start by specifying a standard product from a choice of more than 50 different models then request a sample.

OKW's standard products are based on areas of application such as machine-mounted, laboratory benchtop or handheld electronics. Within the models, there are different sizes and versions in various designs and colours. Options also include a choice of materials and protective properties, mounting options or wired/battery power supply.

Customisation services offered in-house by the OKW Service Centre further add to the possibilities. There are few enclosure solutions that cannot be implemented from standard. OKW's services include drilling and milling, custom colours, complex print images and EMC shielding.

This ultimately creates a unique device with a design that sends a message to users: "I am innovative, professional, safe, ergonomic and valuable."

The article was based on the panel discussion "We give embedded systems a home", VIP stage "Market & Technology" at the Embedded World 2023 in Nuremberg. If you are interested, use the QR code to access the recording:





PRODUCT SUPPLEMENTS

Cable glands with integrated pressure compensation

Electronics in hermetically sealed enclosures need protection from condensation caused by changes in temperature and pressure. OKW can supply cable glands with an integrated pressure compensation element that provides constant ventilation. These cable glands are available as accessories. They may save you from having to install an additional pressure compensation element.

Sizes: M12 x 1.5, M16 x 1.5 and M20 x 1.5 in light grey (RAL 7035) and black (RAL 9005). Ingress protection: IP 68.



PRODUCT SUPPLEMENTS

Cable glands and grommets in black

New to the accessories range are cable glands and grommets in black as standard.

They suit a wide range of applications including automation, mechanical, plant and electrical engineering. These new accessories are ideal for enclosures and cables specified in dark colours.

PRODUCT SUPPLEMENTS

MINI-DATA-BOX – flanged version available in new colour combination

OKW's new MINI-DATA-BOX is specially designed to house miniaturised electronics such as sensors and wireless technology. These small, robust housings feature a 'diamond-cut' lid for a smart, modern look.

Flanged versions are now available as standard in an attractive new two-colour combination. The top is traffic white (RAL 9016) while the bottom is traffic grey A (RAL 7042). This new colour scheme supplements the existing standard single-colour options available for all versions: RAL 9016 (traffic white) and RAL 7016 (anthracite).

MINI-DATA-BOX's flanges accommodate both cable ties and mounting screws – enabling these 'go anywhere' enclosures to be mounted on walls, machines, ceilings, pipes, masts and rails quickly and easily. They can also be used on a table-top or carried in a pocket.

Typical applications include mini gateways for IoT/loMT, GPS transmitters with BLE, NFC and iBeacon for smart logistics and goods tracking in warehouses. The enclosures are ideal for both indoor and outdoor use. IP 40 ingress protection is standard; this can be increased to IP 65 with a seal (accessory).

Specify MINI-DATA-BOX fully customised. OKW's in-house Service Centre offers CNC machining, lacquering, printing, laser marking, EMC shielding, and installation/assembly.





PRODUCT SUPPLEMENTS

CONNECT wired/wireless plastic enclosures – new slimline size

OKW's CONNECT enclosures are ideal for wired electronics – either handheld, table top, wall-mounted or freely suspended. They are also great for battery-operated mobile devices.



Applications include computer peripherals, networks, interfaces, security and control, Industry 4.0, IoT/IIoT, sensors, medical devices, remote controls, test and measurement.

CONNECT's two shells snap together – there are no fixing screws. This reduces assembly time and gives designers a choice of two 'fronts'. Apertures at both ends can be fitted with either a cable gland or an end panel.

And now a new slim-width (42 mm) version of CONNECT is available in three lengths – 60 mm, 90 mm and 120 mm – enabling miniaturised electronics to be packaged even more compactly. Previously, CONNECT was available only in a width of 54 mm.

CONNECT enclosures are moulded from UV-stabilised ASA+PC (UL 94 V-0) in off-white (RAL 9002) and black (RAL 9005) as standard.

Accessories for CONNECT include rail holding clamps, wall holders, end parts and cable gland kits.

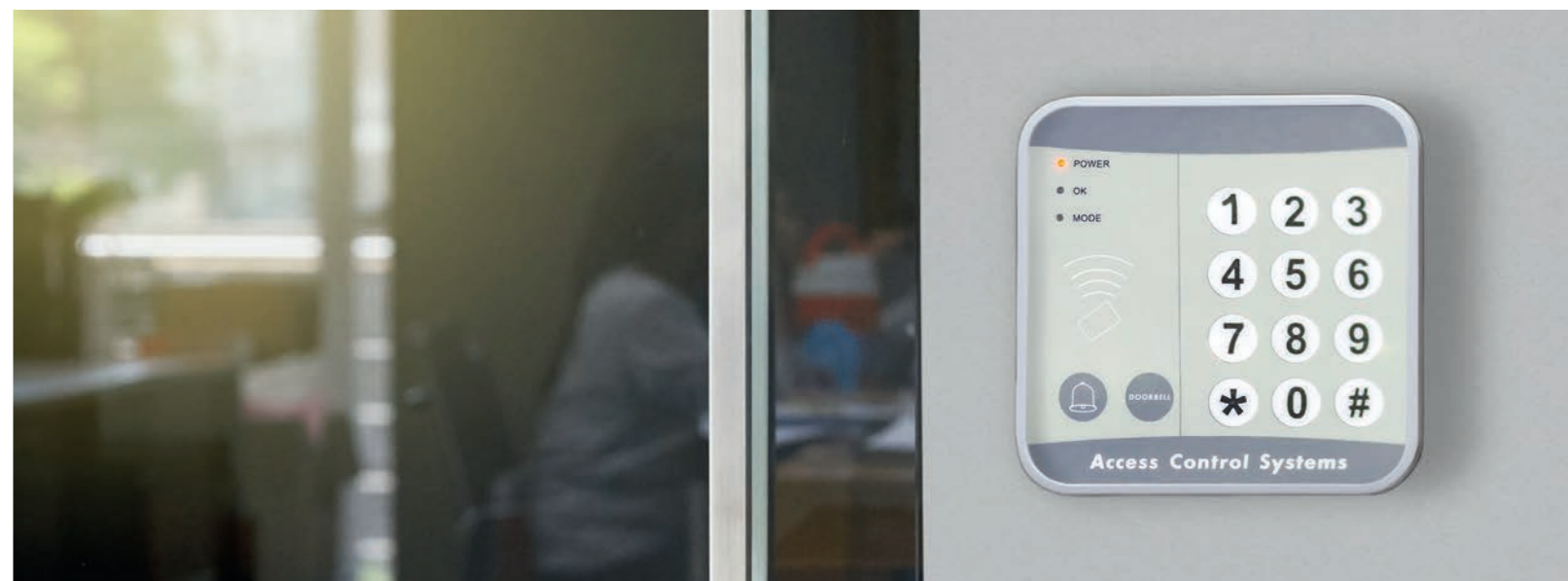
PRODUCT SUPPLEMENTS

SMART-PANEL: Elegant wall-mount enclosures in a new size

The SMART-PANEL wall-mounted enclosure range offers attractive space for intelligent systems for easy control and monitoring of the entire building services system.

The new S114 SMART-PANEL (114 x 114 mm) supplements the existing S84 (84 x 84 mm) and E155 (155 x 84 mm) sizes with a larger, square version. Thus, in addition to installation on standard flush-mounted / cavity wall boxes with an installation opening of 61 mm, installation on larger, international device boxes up to max. 100 x 100 mm is also possible. Made of high-quality V0 ASA+PC material in traffic white (RAL 9016), the enclosure will also impress you with its elegant appearance: bottom part highly polished, top part with a fine surface structure and, in addition, screwless enclosure assembly with a snap-in function. The flat, recessed surface for interface integration in the bottom part and the recessed operating area in the top part for protecting membrane keyboards, display and operating elements or, for example, touch screens round off the design of the enclosure.

SMART-PANEL applications include: building services and security systems, electrical installation, smart-home and office, IoT/IIoT, wireless communication, measuring and control technology, medical and laboratory equipment.



NEW LASER MARKING

For even more possibilities

The newly purchased laser marking offers endless possibilities for the design of customer-specific products: direct component markings, logos, designs, barcodes, serial numbers, photos, and readable 1-point fonts as well as the smallest geometries. In addition, the highest quality requirements are met in terms of legibility and durability of the marking. This also enables compliance with the strictest guidelines such as UID-UDI, etc.

Thanks to variable axes and the possibility of segmentation, it is also possible to line up several marking areas. The new laser achieves very high, reproducible printing accuracy on many plastics and metals.



Fluorescent and photoluminescent inks

BE SEEN!

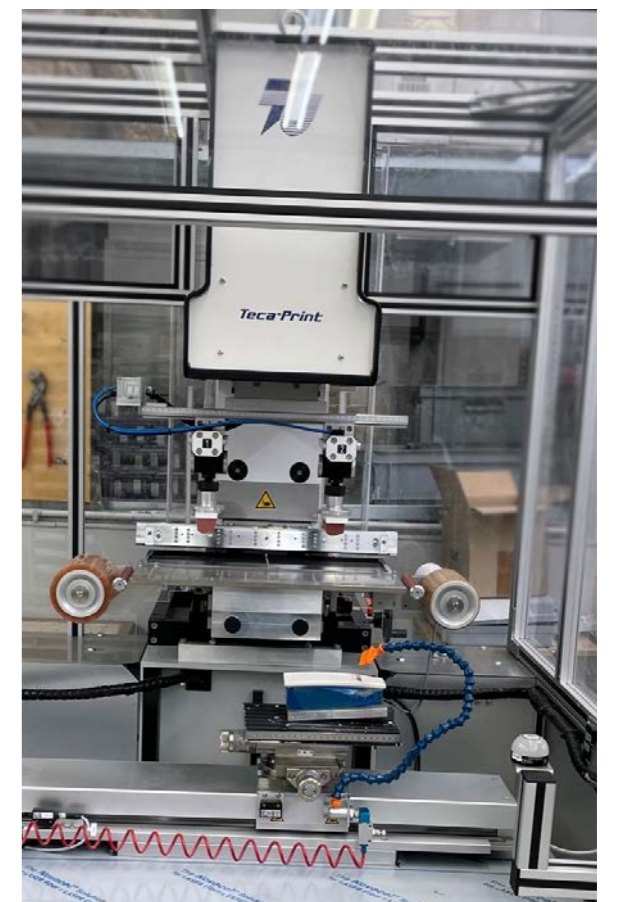
Whether in hazardous areas or in diffuse lighting conditions, sometimes attracting attention is not only desirable but also necessary. OKW has expanded its range of custom printing colours to meet these requirements.

Customers can now specify OKW's products with labels and graphics produced (by screen or tampo printing) using new fluorescent inks. These are ideal for warning messages or for attracting attention to the equipment (for example with emergency electronics). These special inks convert invisible UV light into visible light. In this way, colours are perceived to be brighter, and a stronger contrast is achieved

with the same light intensity. This effect is particularly strong against a dark background. Also known as hi-vis or signal inks, these fluorescent inks are available in yellow, orange, red, pink, and green. It is also often important to consider the visibility of safety and orientation signs or the highlighting of specific device functions during hours of darkness or in low light levels. For this purpose, so-called photoluminescent inks (phosphorescent inks) are offered by OKW. These special inks are mixed with phosphor particles and can absorb light, store it, and give it off again in the dark as an afterglow effect. These inks can be used to achieve very impressive effects in the screen printing process. Generally speaking, however, they are not intended for use against dark backgrounds.

Tampo printing upgraded

Our service center has further expanded and modernized the "Tampo printing" area. The new tampo printing machine with an open ink dispenser system enables the simultaneous printing of 2 colors in a highly flexible printing process. The standard sizes are 250, 350, and 450 mm wide and 100 or 120 mm deep. The tampon position is infinitely adjustable using the horizontally and vertically adjustable standard holders. The new printing machine delivers high printing strength and outstanding printing accuracy.



INTRODUCING OUR NEW CRM SYSTEM



Author: Andrea Dietrich, Process management at OKW Gehäuseysteme

A collaboration journey

Rolec and OKW have launched a joint project to work hand-in-hand with sales companies Orca Nord, Orca Süd and OKW Kunststofftechnik.

A new CRM system will transform the way we work and take our customer service to a new level. Work started in February 2023. Since then, we have been meticulously examining processes, implementing improvements and making adjustments to ensure that this new CRM system meets our needs exactly.

Mapping all our processes, requirements and procedures in a single system is an enormous challenge

but we have the common goal of mastering it. The new CRM system went live on November 27, 2023. We can't wait to see the positive effects on our daily work.

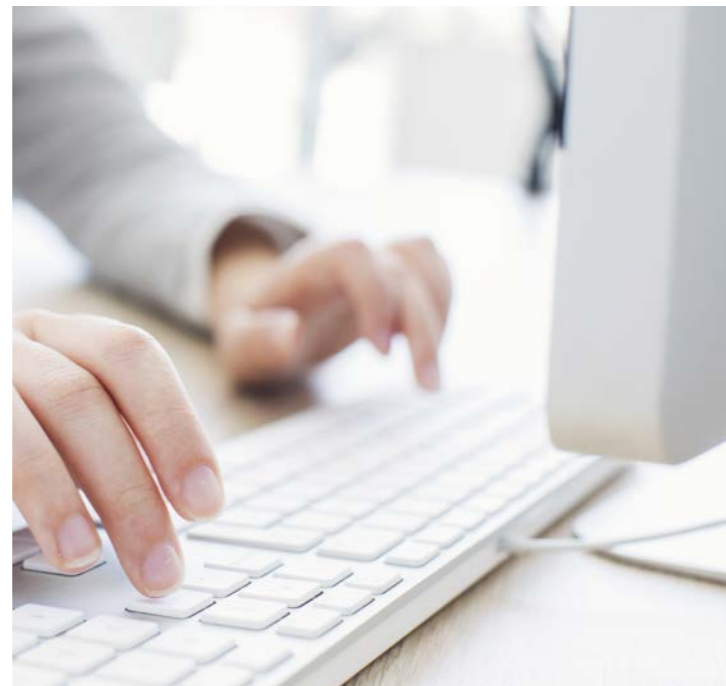
This project shows what we can achieve as a team when we pull together. We are confident that our new CRM system will increase our efficiency and improve the way we interact with our customers. We're grateful for the commitment and support of everyone involved in this journey. Together we will achieve a successful 'go live' in November and take our work to a new level.

Update to SAP S/4HANA

Alongside the new CRM system, we started the project kick-off for the transition to SAP S/4HANA in April 2023.

This is not just a technical change but an opportunity to carry out some thorough data cleansing, enabling us to start the future fresh and reinvigorated. Workshops will take place in October: we will jointly define goals, assess risks and develop key topics for the S/4HANA transformation.

The first half of 2024 will be dominated by the necessary preparations for this exciting transformation. We are working together enthusiastically to optimise our business processes. Together we will achieve great things!



INVESTMENT IN THE FUTURE

OKW is creating an ultra-modern logistics centre to improve the storage, assembly and worldwide distribution of our electronic enclosures and tuning knobs. Planning began in 2020 as part of a comprehensive investment strategy to further modernise our company headquarters.

A groundbreaking ceremony on July 25 2023 signalled the start of construction of the 3,000-square-metre, nine-metre-high new structure.

"Our employees will have access to the most modern storage technology and a flexible and optimal hall layout to organise our storage and shipping activities," said Logistics Manager Alexander Krylow. The new logistics centre will have a positive impact on energy efficiency as well as optimisation of the storage, picking and shipping processes. It will have 5,000 storage spaces.

Thanks to the 17-person logistics team, enclosure solutions will be delivered on a new scale to more than 52 countries around the world. There is also construction work taking place in the fully renovated administration building, which opened in 2019.

A new extension will provide around 500 square metres of space for an exhibition, training and education centre. There will also be a new entrance and company canteen.

Project spokesperson Yvonne Ellwanger said: "The building will occupy a central place in our operational area. It will connect two floors of the administration building with the logistics and production halls. "That's why we want to establish places of communication here and finally give our products a central location," she added.

During the expansion of the administration building, social spaces will be located directly next to the new canteen.

Now OKW will finally have a central social area in the new part of the building. There will also be outdoor access when the weather is good.

The focus here is on sustainable construction: "Whenever possible, parts of the building are put to new uses before the old is demolished and the new is built," said Managing Director Christoph Schneider. "After all, every piece of concrete contains a piece of our company and family history – and instead of removing it, it feels better to build on it," he added.



DESERVED RETIREMENT AFTER 33 YEARS OF SERVICE

Mrs. Dagmar Hasselbach was hired as a technical draftsman on September 15, 1989. On November 28th, 2022 she went into well-deserved retirement after 33 years of service to the company.

OKW recruited Jochen Wiesbächer as her successor on May 15, 2022, leaving enough time for in-depth training. He continues Mrs. Hasselbach's duties and among his responsibilities at OKW he deals with tasks such as creating drawings based on existing models, creating new products and linking them to the website and even creating and editing product photos.



Successor Jochen Wiesbächer



Marcella Loser retires from OKW...

... but stays a little longer to help!

Since November 1 2019, Marcella Loser has actively supported OKW's sales department and order processing. And on April 1 2023 she started her well-deserved retirement. But we're delighted that – even though Marcella has retired – she will continue to work for OKW for several hours a week. She will be here until December, supporting our sales team.

"I found a new family at OKW – people value you here!" said Marcella. It has been an honour to have Marcella's experience and dedication during her time here at OKW. We're very grateful for all her help and wish her the very best in this new stage of her life.



Marcella Loser (5th from the right)

NEWS FROM OUR OWN ROW: LISA-MARIE OTT TAKEN ON AFTER SUCCESSFUL EXAMINATION

Hello,

my name is Lisa-Marie Ott and I successfully completed my training as an industrial clerk in July 2023. During my training, I went through various departments at OKW - which I really enjoyed - because it allowed me to get to know the different processes in the company and my colleagues. This also gave me the opportunity to meet other companies in the OKW Group.

My colleagues, from the various departments, always supported me and that made me feel very comfortable right from the start, I must say that working with them was fun. The preparation for the exam was also very good and gave me a good feeling about the final exam.

I have now been working in the national sales department since November 2022. My main tasks in this area are customer service, creating offers and calculating appropriate prices. I also record complaints and from time to time enter orders myself. In my area of responsibility, I actually have interfaces with all departments of the company: production, logistics, technology, marketing and purchasing.

I am happy to be a permanent member of the turtle family and feel very comfortable in my new, now-established area of responsibility.





OKW GROUP AS PRACTICE PARTNER

MINT im Odenwald



Author: Nadja Schneider, OKW GmbH Authorized Representative

A project from the Joachim & Susanne Schulz Foundation and the Federal Ministry of Education and Research

- OKW Group as practice partner -

When it comes to the technical sector, many regional companies are experiencing a shortage of skilled apprentices. Positions are no longer filled, with the result that there are often no technical trainees. The OKW Group is counteracting this trend by enabling young people with the MINT project in the Odenwald to get a taste of apprenticeships while still at school, enabling them to become enthusiastic about technology.

Above all, the initiative is targeting young people from non-grammar schools – giving them the chance to discover their talent and recognise the appeal of the technical professions.

In a varied, technically oriented programme co-organised by OKW, young people are being encouraged to try their hand at engineering.

The first course, which took place on Wednesday afternoons from November to December 2022, was a complete success.

In addition to learning the basics needed in a workshop, the 12 participants were able to try out their technical skills in small projects at OKW and apply what they had learned.



Working on CNC milling machine

With the guidance and support of OKW's employees, they created a moneybox from a SYNERGY enclosure. The work included project planning, processing and customisation.

Follow-up courses were also well received. A new, fully booked course including a project day started at OKW in April. This time, in-house trainees supervised the course day and organised a technology rally for interested boys and girls.

On June 5th, 2023, Bettina Stark-Watzinger, Federal Minister of Education and Research, visited the transnational network project, which is funded by the ministry. "The skilled worker shortage problem has reached the political area. However, in addition to federal initiatives, local partners are also involved. Vocational orientation is a key factor in triggering the necessary social shift from academic to vocational training...here, the BMBF (Federal Ministry of Education & Research) strives to promote processes that are as sustainable as possible," said the Minister.

"The MINT im Odenwald Cluster, which consists of the Joachim & Susanne Schulz Foundation's research workshop and the OKW Group, is actively tackling this problem in the hope of making apprenticeships more attractive again."



Assembly activities



Laser processing



OKW

GEHÄUSE SYSTEME



SOLID-BOX Application example
as a wireless voltage receiver



SOLID-BOX Application example
as a measuring system in SMART FARMING

Odenwälder Kunststoffwerke
Gehäusesysteme GmbH
Friedrich-List-Str. 3
D-74722 Buchen
Tel. +49 (0) 62 81 / 404-00
EMail Info@okw.com
Web www.okw.com

